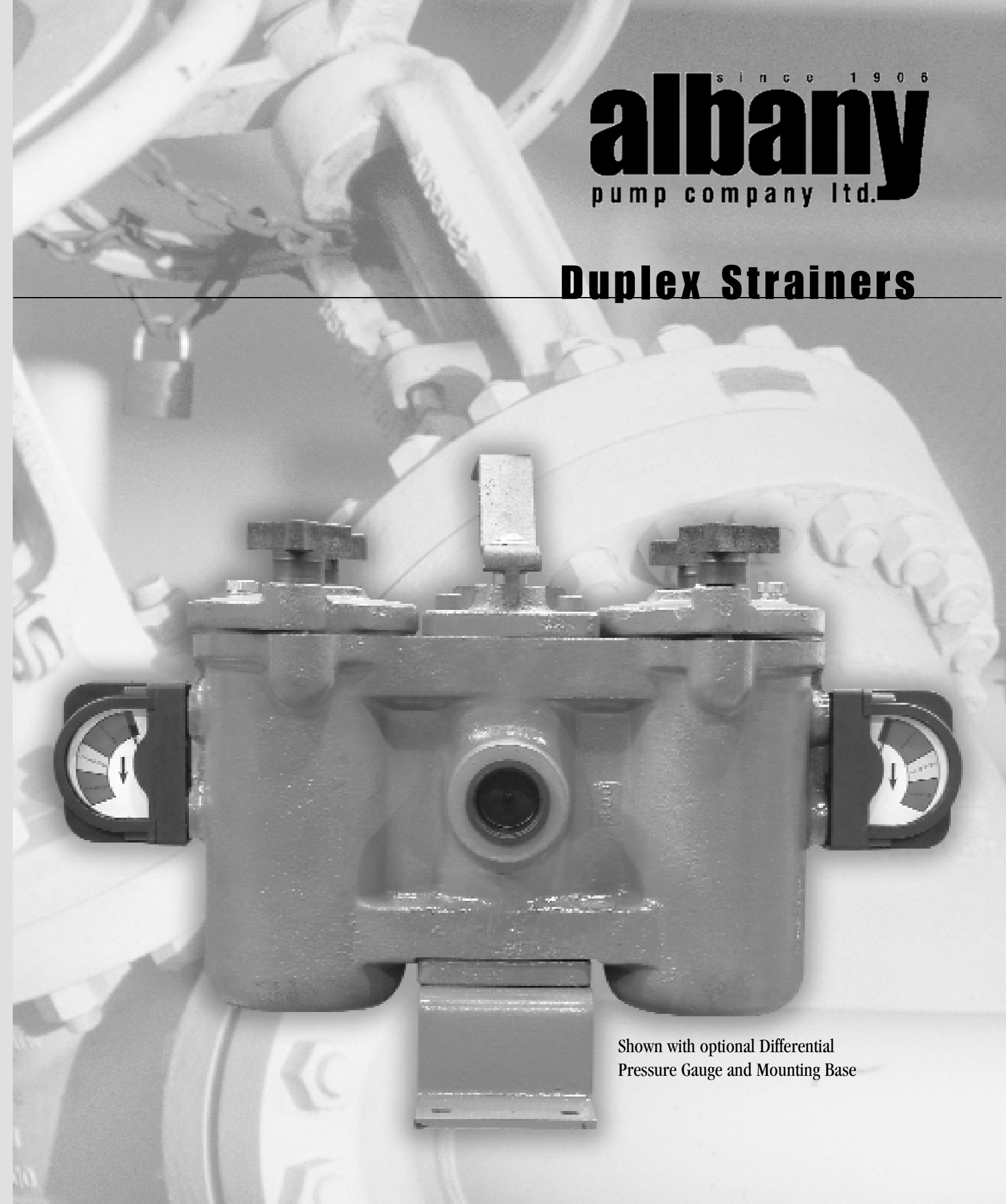


since 1906  
**albany**  
pump company ltd.

## Duplex Strainers



Shown with optional Differential  
Pressure Gauge and Mounting Base

420 Harry Walker Parkway, Newmarket, Ontario L3Y 8P5  
tel. 888.334.3348 fax. 888.335.3391  
sales@albanyump.com

since 1906  
**albany**  
pump company ltd.

## INSTALLATION

When fitting a strainer into a pipeline take care not to cause stress to the body of the strainer. Allow for adequate support of the weight of the strainer. (An optional foot-mount bracket is available). Be sure to allow enough room for the removal of the baskets for cleaning. The strainer faces are marked INLET and OUTLET to ensure proper installation. These strainers are intended for horizontal flow only. All strainers are suitable for pressure or suction applications.

## OPERATION

Prior to start-up ensure that the proper baskets are installed and all covers are tightly sealed. Use Extreme Caution when removing basket covers when the strainer is in operation. The valve handle will be positioned over the chamber which is in use. Rotating the handle 180 degrees will divert the flow to the opposite chamber. **DO NOT** open either cover with the handle in the centre position. **OPERATION OF THE STRAINER WITH THE HANDLE IN THE CENTRE POSITION IS NOT RECOMMENDED.** There is no pressure drop advantage with this position and it is preferable to have one side open and the side on standby.

## CLEANING (See Diagram 1)

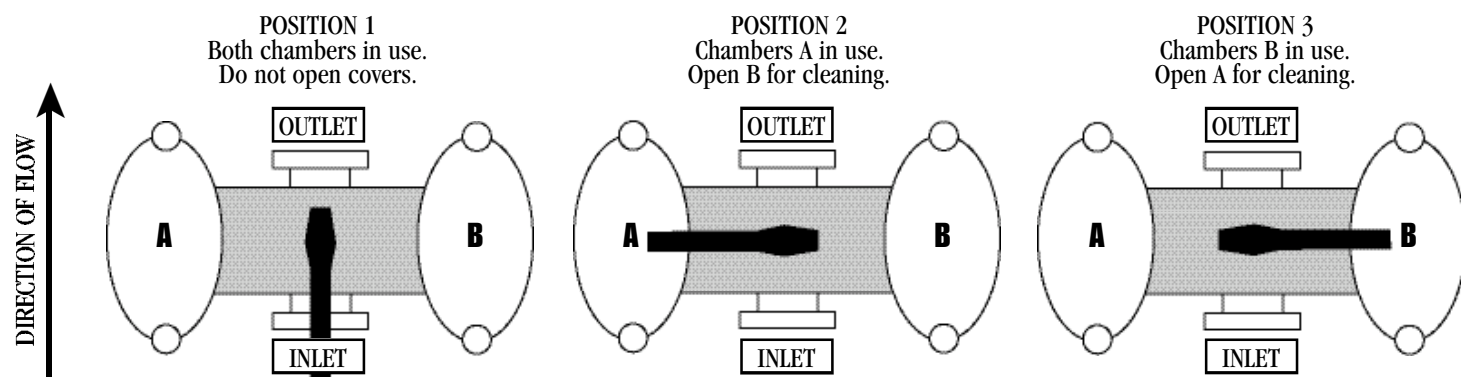
A differential pressure increase of 5 psi across the strainer indicates that the basket in operation is dirty and needs to be removed and cleaned.

### CAUTION

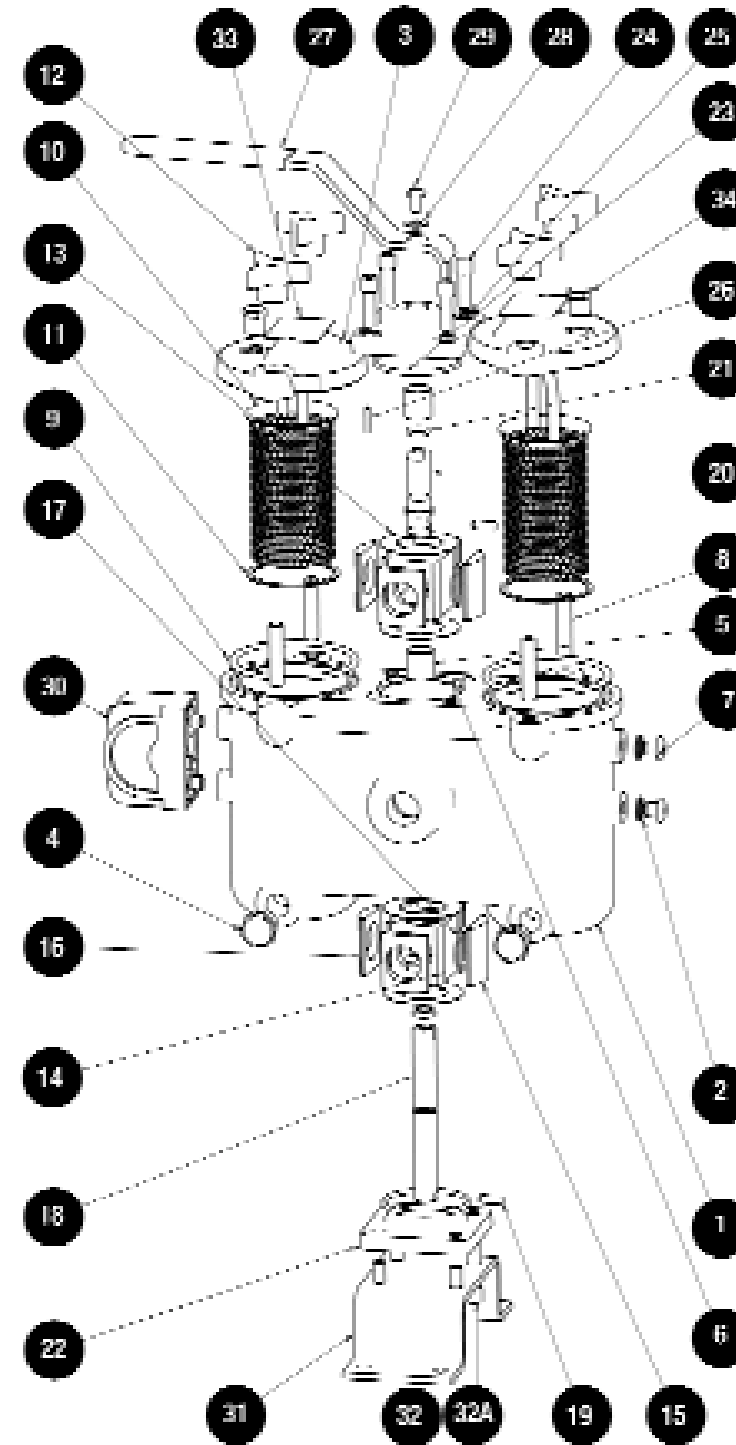
To prevent damage to the baskets, **DO NOT** allow the differential pressure across the strainer to exceed 20 psi. (Differential pressure gauges are available, as an option, to monitor the pressure drop across each basket and indicate when cleaning is required).

To clean strainer basket in Chamber A, move diverter Handle to Position 3. For strainers operating under pressure, slowly open the cover vent and/or drain valve. This relieves the internal pressure in dirty chamber. After pressure is relieved, slowly loosen cover clamping nut and rotate cover. Drain excess fluid through the chamber drain to a level below the basket seat. This will prevent the by-pass of dirty fluid. Remove dirty basket and clean or replace. Re-install clean basket and make sure drain plug and vent are tightened. Swing cover plate into position and secure by tightening handnuts. Turn the diverter handle to allow partial flow to the cleaned chamber. For strainers operating under pressure, open the vent until all trapped air is vented from the basket chamber. The cleaned chamber is now ready for use. The same procedure applies to Chamber B except that the diverter handle is turned to Position 2.

Diagram 1



## PARTS LIST



ITEM	QTY	PART NUMBER	DESCRIPTION
1	1	BSD075-1000CI	Strainer Body Assembly
2	4	BS075-7200	Sealing Washer
3	2	BS075-1200	Basket Cover
4	2	BS-7400	1/2" pipe Plug
5	2	BSD075-2000	Bronze Bushing
6	2	BSD075-4100	Brass Sleeve (Part of item 1)
7	4	BS075-7100	Button Head Screw
8	4	BS-7500	3/8" Stud 1.75 in
9	2	BS075-6000	Cover O-Ring
10	2	BS075-SS-60M	Strainer Basket
11	2	BS075-6500	Teflon Basket Ring
12	4	BS075-7000	Cover Knob
13	4	BSD075-6400	Teflon Flat Washer
14	2	BSD075-4000	Valve Rotor
15	2	BSD075-5100	Teflon Quarter w-Groove
16	6	BSD075-5000	Teflon Quarter w-Hole
17	2	BSD075-6400	Teflon quarter O-Ring
18	1	BSD075-3100	Valve Coupling Shaft
19	2	BSD075-7600	Split Pin 1 - 4 x 5 - 8
20	1	BSD075-3000	Valve Shaft
21	2	BSD075-6300	O-Ring - Shaft
22	1	BSD075-1400	Valve Cover Button
23	2	BSD075-6200	O-Ring Valve Cover
25	1	BSD075-1300	Valve Cover Top
26	1	CEP-7600	Split Pin 1 - 8 x 3 - 4
27	1	BSD075-7050	Handle
28	1	BS075-7300	Steel Washer 1 - 4 in
29	1	HHCS250500	Hex Head Cap Screw
30	2	DP-GAUGE	Gauge Assemble (optional part)
31	1	BS075-7100	Mounting Base (optional part)
32	4	SHCS51618100	Socket Head Cap Screw (without base)
32A	4	SHC651618125	Socket Head Cap Screw (with base)